

2

1

B

B

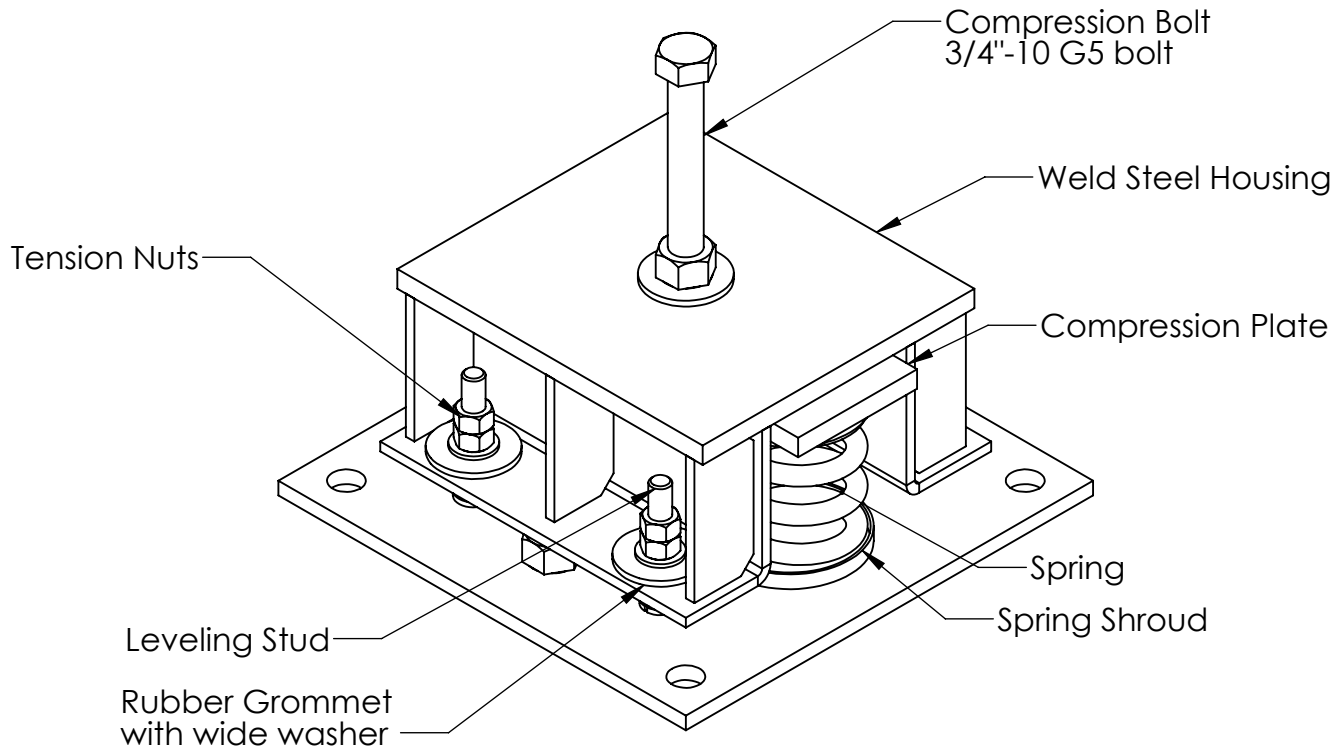


Figure (1)

SEISMIC RESISTANT RATING

VERTICAL	10,000
END	10,000
SIDE	10,000

A

A

SIGMA SOURCE LLC

150N.Santa Anita Ave Suite 300

Acradia,CA91006

Tel:(626) 203-6401

Fax: (267) 948-5441

email: ahmed.haider@panacheg.com

DIMENSIONS ARE IN INCHES

TOLERANCES:

FRACTIONAL ±

ANGULAR: MACH ± BEND ±

TWO PLACE DECIMAL ±

THREE PLACE DECIMAL ±

MATERIAL

FINISH

DO NOT SCALE DRAWING

	NAME	DATE
DRAWN	A0	4/6/2021
CHECKED	M.GH	4/6/2021
ENG APPR.	A.H	4/6/2021
MFG APPR.		
Q.A.		
COMMENTS:		

TITLE:

**SSI_2SR_41T
SPRING ISOLATOR
EARTHQUAKE
RESTRAINT**

SIZE	DWG. NO.	REV.
A	SSI_2SR_41T CUT SHEET	

WEIGHT:

SHEET 1 OF 4

2

1

SSI-2SR-41T Ratings (1-inch Deflection 2 Spring Isolators)

Catalog No.	Spring Rate (lb)	Min Load (lb)	Rated Deflection (in)	Max Load (lb)	Max Deflection (inch)	Spring Color
SSI_2SR_1_100_200	100	200	1	300	1.5	Red
SSI_2SR_1_600_900	300	600	1	900	1.5	Pink
SSI_2SR_1_800_1200	400	800	1	1200	1.5	Red+Pink
SSI_2SR_1_1000_1500	500	1000	1	1500	1.5	Light+ Green
SSI_2SR_1_1200_1800	600	1200	1	1800	1.5	Light+ Blue
SSI_2SR_1_1400_2100	700	1400	1	2100	1.5	Light+ Blue+Red
SSI_2SR_1_1600_2400	800	1600	1	2400	1.5	Orange
SSI_2SR_1_2000_3000	1000	2000	1	3000	1.5	Purple
SSI_2SR_1_2200_3300	1100	2200	1	3300	1.5	Pink+Orange
SSI_2SR_1_2600_3380	1300	2600	1	3380	1.3	Yellow
SSI_2SR_1_2800_4200	1400	2800	1	4200	1.5	Dark+ Blue
SSI_2SR_1_3000_4500	1500	3000	1	4500	1.5	Purple+Light Green
SSI_2SR_1_3200_4160	1600	3200	1	4160	1.3	Yellow+Pink
SSI_2SR_1_3600_4680	1800	3600	1	4680	1.3	Black
SSI_2SR_1_3800_5700	1900	3800	1	5700	1.5	Dark Blue+Light Green
SSI_2SR_1_4200_5460	2100	4200	1	5460	1.3	yellow + orange
SSI_2SR_1_4400_6600	2200	4400	1	6600	1.5	Dark +Blue+ Orange
SSI_2SR_1_2300_5980	2300	4600	1	5980	1.3	Black+Light+ Green
SSI_2SR_1_5200_6760	2600	5200	1	6760	1.3	Black+ Orange
SSI_2SR_1_6200_8060	3100	6200	1	8060	1.3	Black+ Yellow

SIGMA SOURCE LLC

150N.Santa Anita Ave Suite 300

Acradia, CA 91006

Tel: (626) 203-6401

Fax: (267) 948-5441

email: ahmed.haider@panacheg.com

DIMENSIONS ARE IN INCHES

TOLERANCES:

FRACTIONAL ±

ANGULAR: MACH ± BEND ±

TWO PLACE DECIMAL ±

THREE PLACE DECIMAL ±

MATERIAL

FINISH

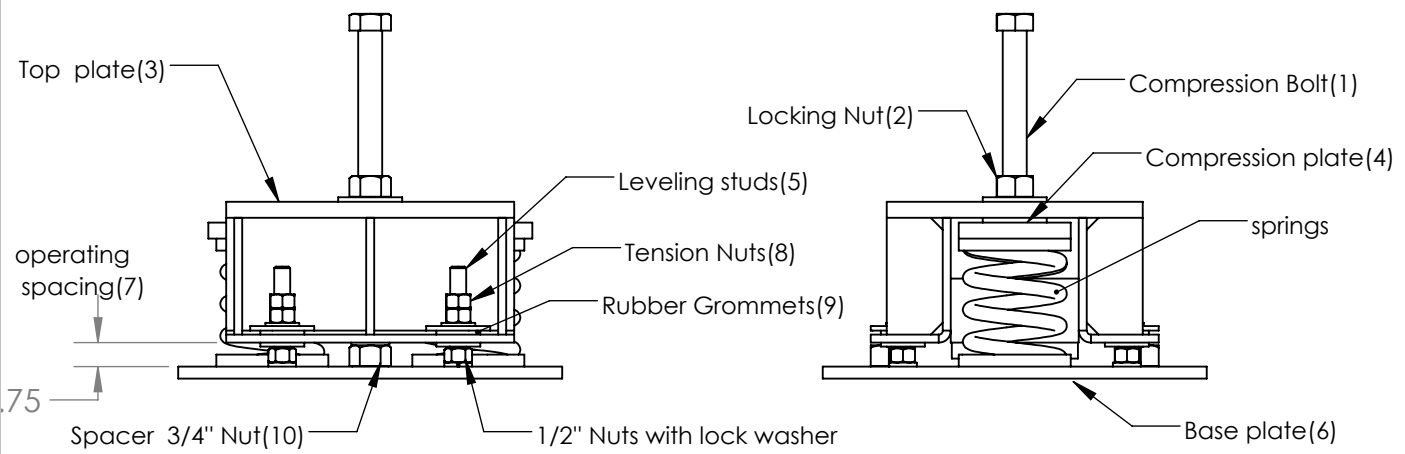
DO NOT SCALE DRAWING

	NAME	DATE
DRAWN	A0	4/6/2021
CHECKED	M.GH	4/6/2021
ENG APPR.	A.H	4/6/2021
MFG APPR.		
Q.A.		
COMMENTS:		

TITLE:

**SSI_2SR_41T
SPRING ISOLATOR
EARTHQUAKE
RESTRAINT**

SIZE	DWG. NO.	REV.
A	SSI_2SR_41T CUT SHEET	
WEIGHT:		SHEET 2 OF 4



Figure(2)

INSTALLATION OF EQUIPMENT ON ISOLATOR RESTRAINTS AT EACH LOCATION SELECTED

1- ISOLATOR POSITIONING WITHIN EQUIPMENT:

- POSITION THE ISOLATORS IN ACCORDANCE WITH THE EQUIPMENT MANUFACTURER DRAWINGS.
- ENSURE THAT ALL ISOLATOR CENTERLINES MATCH THE EQUIPMENT MOUNTING HOLES.

2- ISOLATOR LEVELING:

- IN CASE OF UNLEVELED OR UNEVEN SURFACES, USE LEVELING STUDS (5) TO LEVEL THE ISOLATOR BASE PLATES (6).
- SHIM OR GROUT UNDER THE BASE PLATE (6) AS NEEDED.

3- ISOLATOR BASE PLATE ANCHORING:

- IN CASE OF INSTALLING TO CONCRETE PAD, MARK AND DRILL ALL ANCHOR HOLES PER SEISMIC CALCULATION RECOMMENDATIONS.
- IN CASE OF INSTALLING TO STEEL SURFACE, WELD ISOLATORS OR BOLT THEM DOWN PER SEISMIC CALCULATION RECOMMENDATIONS.

4- EQUIPMENT SETTING ON ISOLATORS:

- REMOVE COMPRESSION BOLTS (1) WITH THEIR NUTS AND WASHERS.
- PLACE THE TWO Spacer 3/4" Nut(10) HORIZONTALLY BETWEEN THE BASE PLATE AND THE HOUSING IN THE OPERATING CLEARANCE AS SHOWN IN ABOVE FIGURES.
- PLACE EQUIPMENT ON ISOLATOR TOP PLATES.
- ALIGN THE EQUIPMENT MOUNTING HOLES WITH THE HOLES IN THE TOP PLATE.
- PASS ALL COMPRESSION BOTLS (1) THROUGH EQUIPMENT MOUNTING HOLES AND TURN THROUGH THE THREADED TOP PLATE HOLES.
- KEEP THE LOCKING NUT (2) AT THE TOP OF THE BOLT TO MAKE ROOM FOR ISOLATOR ADJUSTMENT.

5- ISOLATOR ADJUSTMENT:

- EQUIPMENT SHOULD BE IN ITS FULL OPERATING WEIGHT.
- LOAD COMPRESSION PLATE BY TURNING ALL COMPRESSION BOLTS (1) UNIFORMLY UNTIL ALL SPRINGS ARE COMPRESSED AND THE EQUIPMENT IS SUPPORTED COMPLETELY BY THE SPRINGS.
- ENSURE EQUIPMENT LEVELING BY SEQUENTIALLY ADJUSTING EACH ISOLATOR BY ADDITIONAL TURNING OF THE COMPRESSION BOLT ONE TURN AT A TIME. REPEAT THIS PROCESS UNTIL EQUIPMENT IS LEVELED AND THE OPERATING CLEARANCE (7) IS APPROXIMATELY 3/4" AND THE TENSION NUTS (8) ARE NOT SQUEEZING THE RUBBER GROMMETS (9).
- REMOVE THE TWO TEMPORARY SPACING 3/4 .
- TURN DOWN AND HAND TIGHT THE LOCKING NUT (2)

SIGMA SOURCECELLC

150N.Santa Anita Ave Suite 300
 Acradia,CA91006
 Tel:(626) 203-6401
 Fax: (267) 948-5441
 email: ahmed.haider@panacheg.com

DIMENSIONS ARE IN INCHES
 TOLERANCES:
 FRACTIONAL ±
 ANGULAR: MACH ± BEND ±
 TWO PLACE DECIMAL ±
 THREE PLACE DECIMAL ±

MATERIAL
 FINISH
 DO NOT SCALE DRAWING

	NAME	DATE
DRAWN	A0	4/6/2021
CHECKED	M.GH	4/6/2021
ENG APPR.	A.H	4/6/2021
MFG APPR.		
Q.A.		
COMMENTS:		

TITLE:

**SSI_2SR_41T
 SPRING ISOLATOR
 EARTHQUAKE
 RESTRAINT**

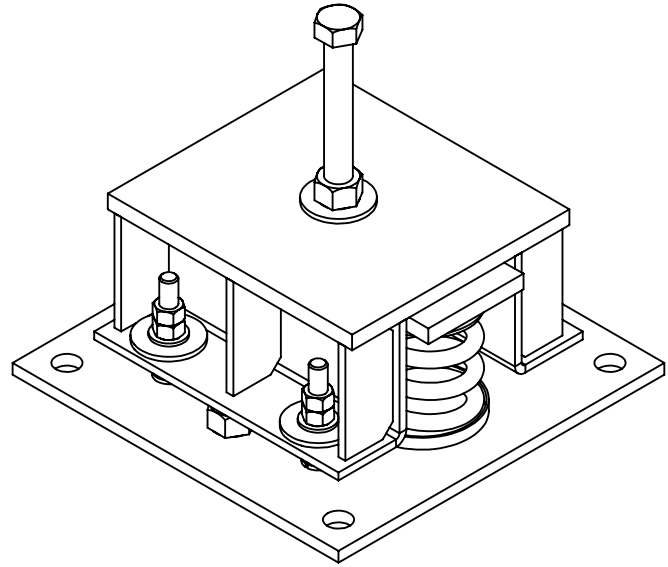
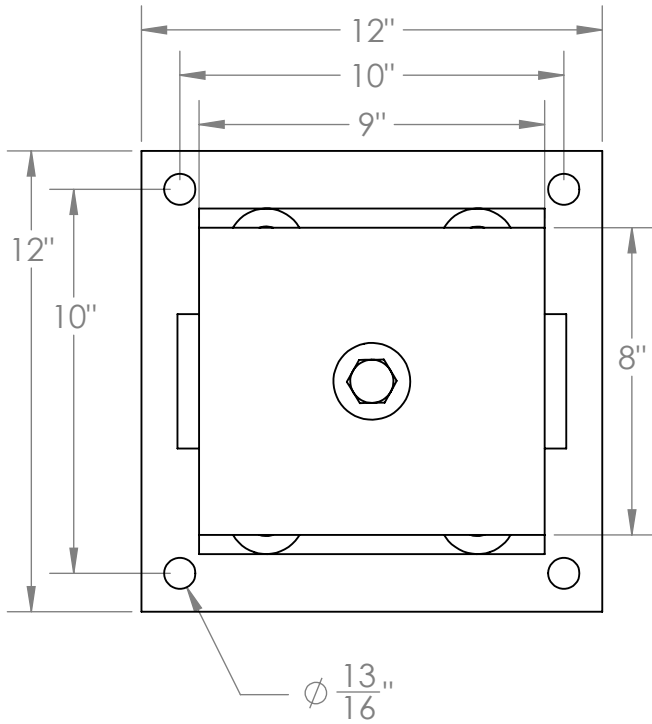
SIZE	DWG. NO.	REV.
A	SSI_2SR_41T CUT SHEET	
WEIGHT:		SHEET 3 OF 4

2

1

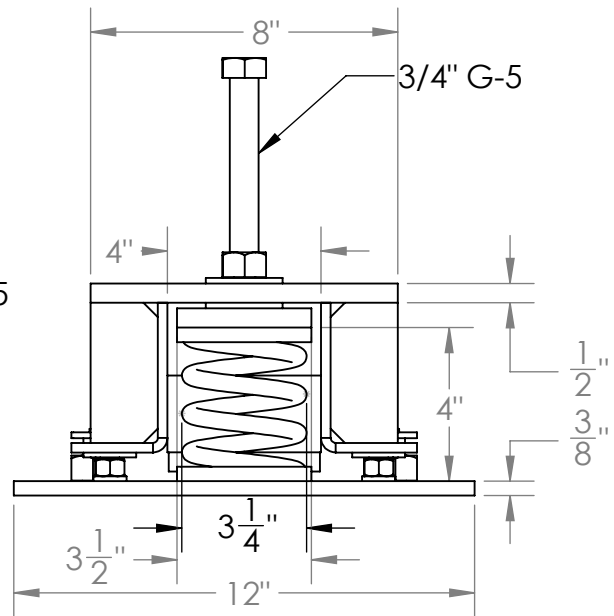
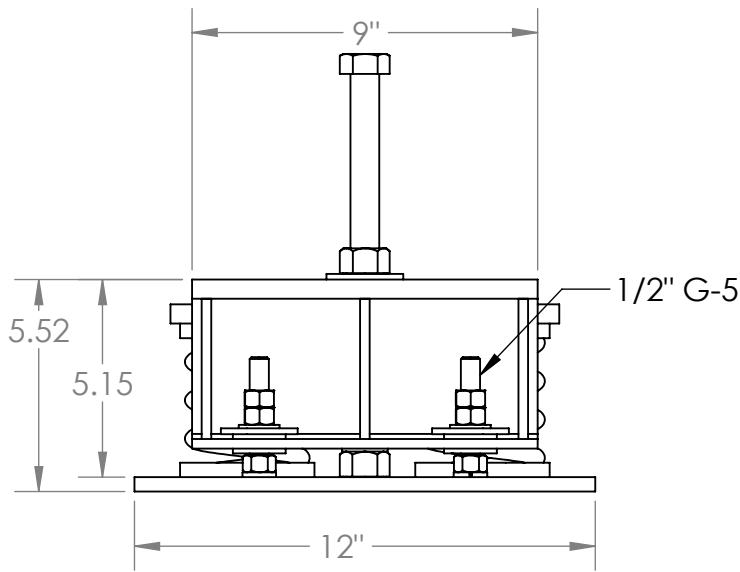
B

B



A

A



SIGMA SOURCELLC

150N.Santa Anita Ave Suite 300

Acradia,CA91006

Tel:(626) 203-6401

Fax: (267) 948-5441

email: ahmed.haider@panacheg.com

DIMENSIONS ARE IN INCHES
 TOLERANCES:
 FRACTIONAL ±
 ANGULAR: MACH ± BEND ±
 TWO PLACE DECIMAL ±
 THREE PLACE DECIMAL ±

MATERIAL

FINISH

DO NOT SCALE DRAWING

	NAME	DATE
DRAWN	A0	4/6/2021
CHECKED	M.GH	4/6/2021
ENG APPR.	A.H	4/6/2021
MFG APPR.		
Q.A.		
COMMENTS:		

TITLE:

SSI_2SR_41T SPRING ISOLATOR EARTHQUAKE RESTRAINT

SIZE	DWG. NO.	REV.
A	SSI_2SR_41T CUT SHEET	

WEIGHT:

SHEET 4 OF 4

2

1